



# Title Plan - LT 530615

---

**Survey Number** LT 530615  
**Surveyor Reference** P18-105 Wainui Road Subdivision 4  
**Surveyor** Kendall Lisa Reid  
**Survey Firm** Wood & Partners Consultants Ltd  
**Surveyor Declaration**

---

## Survey Details

**Dataset Description** Lots 189-193, 22-24, 33 & 809 Being a Subdivision of Lot 1 DP 518236, Lot 2 DP 518237 and Sections 6 and 10 SO 503832

**Status** On Requisition

**Land District** North Auckland **Survey Class** Class A

**Submitted Date** 10/01/2020 **Survey Approval Date**  
**Deposit Date**

---

## Territorial Authorities

Auckland Council

---

## Comprised In

RT 926222  
RT 926223

---

## Created Parcels

Parcels	Parcel Intent	Area	RT Reference
Lot 193 Deposited Plan 530615	Fee Simple Title	0.0719 Ha	911847
Lot 192 Deposited Plan 530615	Fee Simple Title	0.0743 Ha	911846
Lot 191 Deposited Plan 530615	Fee Simple Title	0.0789 Ha	911845
Lot 190 Deposited Plan 530615	Fee Simple Title	0.0744 Ha	911844
Lot 809 Deposited Plan 530615	Vesting on Deposit for Accessway	0.0240 Ha	
Lot 33 Deposited Plan 530615	Fee Simple Title	0.0744 Ha	911848
Lot 22 Deposited Plan 530615	Fee Simple Title	0.0714 Ha	911849
Lot 23 Deposited Plan 530615	Fee Simple Title	0.0570 Ha	911850
Lot 24 Deposited Plan 530615	Fee Simple Title	0.0754 Ha	911851
Area BA Deposited Plan 530615	Covenant - Land		
Area BB Deposited Plan 530615	Covenant - Land		
Area BC Deposited Plan 530615	Covenant - Land		
Area BD Deposited Plan 530615	Covenant - Land		
Area BE Deposited Plan 530615	Covenant - Land		
Lot 189 Deposited Plan 530615	Fee Simple Title	0.0656 Ha	911843
Area X Deposited Plan 530615	Easement		
Area Y Deposited Plan 530615	Easement		
Area AX Deposited Plan 530615	Covenant - Land		
Area AY Deposited Plan 530615	Covenant - Land		
<b>Total Area</b>		<hr/> 0.6673 Ha	

# Schedule / Memorandum

Land Registration District

**North Auckland**

Survey Number

**LT 530615**

Territorial Authority (the Council)

**Auckland Council**

## Schedule of Existing Easements

Last Edited: 17 Sep 2019 12:34:24

<u>Purpose</u>	<u>Shown</u>	<u>Servient Tenement (Burdened Land)</u>	<u>Creating Document Reference</u>
Right to Maintain Garden	X	Lot 23	EI 10225301.11
	Y	Lot 24	EI 10225301.11

## Notes

Last Edited: 08 Nov 2019 11:36:26

Areas shown as AX & AY hereon are to be subject to Land Covenants.

Areas shown as BA - BE hereon are to be subject to Land Covenants.



Diag. A

Ferrier Greys

Ormonde Drive

Wainui Road

Waterloo Road

Part Allot 333 PSH OF Waiwera

Part Allot 59 PSH OF Waiwera

Lot 188 DP 496928

Lot 187 DP 496411

Lot 186 DP 496411

Lot 185 DP 496411

Lot 184 DP 496411

Lot 195 DP 518236

Lot 194 DP 518236

Lot 1 DP 138161

**189**  
0.06556Ha

**190**  
0.07444Ha

**191**  
0.07889Ha

**192**  
0.0743Ha

**193**  
0.0719Ha

BE

BD

BC

BB

BA

325°13' 21.00

21.49 338°24'

236°01' 16.05

23°56' 6.37

210°01' 3.78

192°01' 8.78

40°48' 17.9

12°55' 165.2

179° 1.00

236°10' 1.00

226°27' 22.69

319°27' 11.55

319°27' 11.55

319°27' 11.55

319°27' 11.55

319°27' 11.55

319°27' 11.55

319°27' 11.55

319°27' 11.55

319°27' 11.55

319°27' 11.55

319°27' 11.55

319°27' 11.55

319°27' 11.55

319°27' 11.55

319°27' 11.55

319°27' 11.55

319°27' 11.55

319°27' 11.55

319°27' 11.55

319°27' 11.55

319°27' 11.55

319°27' 11.55

319°27' 11.55

319°27' 11.55

319°27' 11.55

319°27' 11.55

319°00' 5.20

319°00' 5.20

319°00' 5.20

319°00' 5.20

319°00' 5.20

319°00' 5.20

319°00' 5.20

319°00' 5.20

319°00' 5.20

319°00' 5.20

319°00' 5.20

319°00' 5.20

319°00' 5.20

319°00' 5.20

319°00' 5.20

319°00' 5.20

319°00' 5.20

319°00' 5.20

319°00' 5.20

319°00' 5.20

319°00' 5.20

319°00' 5.20

319°00' 5.20

319°00' 5.20

319°00' 5.20

319°00' 5.20

319°00' 5.20

319°00' 5.20

319°00' 5.20

319°00' 5.20

319°00' 5.20

319°00' 5.20

319°00' 5.20

319°00' 5.20

319°00' 5.20

319°00' 5.20

319°00' 5.20

230°37' 13.80

230°37' 13.80

230°37' 13.80

230°37' 13.80

230°37' 13.80

230°37' 13.80

230°37' 13.80

230°37' 13.80

230°37' 13.80

230°37' 13.80

230°37' 13.80

230°37' 13.80

230°37' 13.80

230°37' 13.80

230°37' 13.80

230°37' 13.80

230°37' 13.80

230°37' 13.80

230°37' 13.80

230°37' 13.80

230°37' 13.80

230°37' 13.80

230°37' 13.80

230°37' 13.80

230°37' 13.80

230°37' 13.80

230°37' 13.80

230°37' 13.80

230°37' 13.80

230°37' 13.80

230°37' 13.80

230°37' 13.80

230°37' 13.80

230°37' 13.80

230°37' 13.80

230°37' 13.80

230°37' 13.80

224°57' 5.44

224°57' 5.44

224°57' 5.44

224°57' 5.44

224°57' 5.44

224°57' 5.44

224°57' 5.44

224°57' 5.44

224°57' 5.44

224°57' 5.44

224°57' 5.44

224°57' 5.44

224°57' 5.44

224°57' 5.44

224°57' 5.44

224°57' 5.44

224°57' 5.44

224°57' 5.44

224°57' 5.44

224°57' 5.44

224°57' 5.44

224°57' 5.44

224°57' 5.44

224°57' 5.44

224°57' 5.44

224°57' 5.44

224°57' 5.44

224°57' 5.44

224°57' 5.44

224°57' 5.44

224°57' 5.44

224°57' 5.44

224°57' 5.44

224°57' 5.44

224°57' 5.44

224°57' 5.44

224°57' 5.44

316°00' 6.04

316°00' 6.04

316°00' 6.04

316°00' 6.04

316°00' 6.04

316°00' 6.04

316°00' 6.04

316°00' 6.04

316°00' 6.04

316°00' 6.04

316°00' 6.04

316°00' 6.04

316°00' 6.04

316°00' 6.04

316°00' 6.04

316°00' 6.04

316°00' 6.04

316°00' 6.04

316°00' 6.04

316°00' 6.04

316°00' 6.04

316°00' 6.04

316°00' 6.04

316°00' 6.04

316°00' 6.04

316°00' 6.04

316°00' 6.04

316°00' 6.04

316°00' 6.04

316°00' 6.04

316°00' 6.04

316°00' 6.04

316°00' 6.04

316°00' 6.04

316°00' 6.04

316°00' 6.04

316°00' 6.04

304°52' 16.17

304°52' 16.17

304°52' 16.17

304°52' 16.17

304°52' 16.17

304°52' 16.17

304°52' 16.17

304°52' 16.17

304°52' 16.17

304°52' 16.17

304°52' 16.17

304°52' 16.17

304°52' 16.17

304°52' 16.17

304°52' 16.17

304°52' 16.17

304°52' 16.17

304°52' 16.17

304°52' 16.17

304°52' 16.17

304°52' 16.17

304°52' 16.17

304°52' 16.17

304°52' 16.17

304°52' 16.17

304°52' 16.17

304°52' 16.17

304°52' 16.17

304°52' 16.17

304°52' 16.17

304°52' 16.17

304°52' 16.17

304°52' 16.17

304°52' 16.17

304°52' 16.17

304°52' 16.17

304°52' 16.17

221°45' 5.30

221°45' 5.30

221°45' 5.30

221°45' 5.30

221°45' 5.30

221°45' 5.30

221°45' 5.30

221°45' 5.30

221°45' 5.30

221°45' 5.30

221°45' 5.30

221°45' 5.30

221°45' 5.30

221°45' 5.30

221°45' 5.30

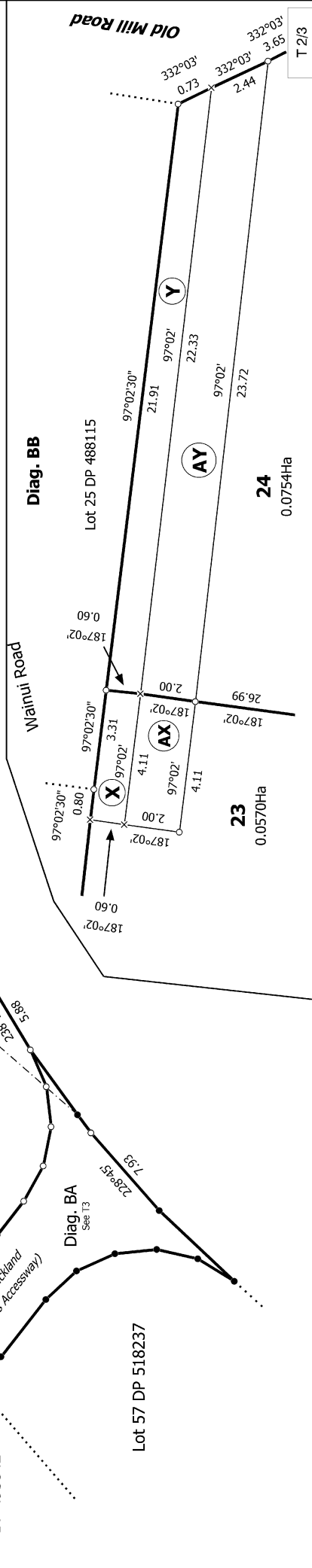
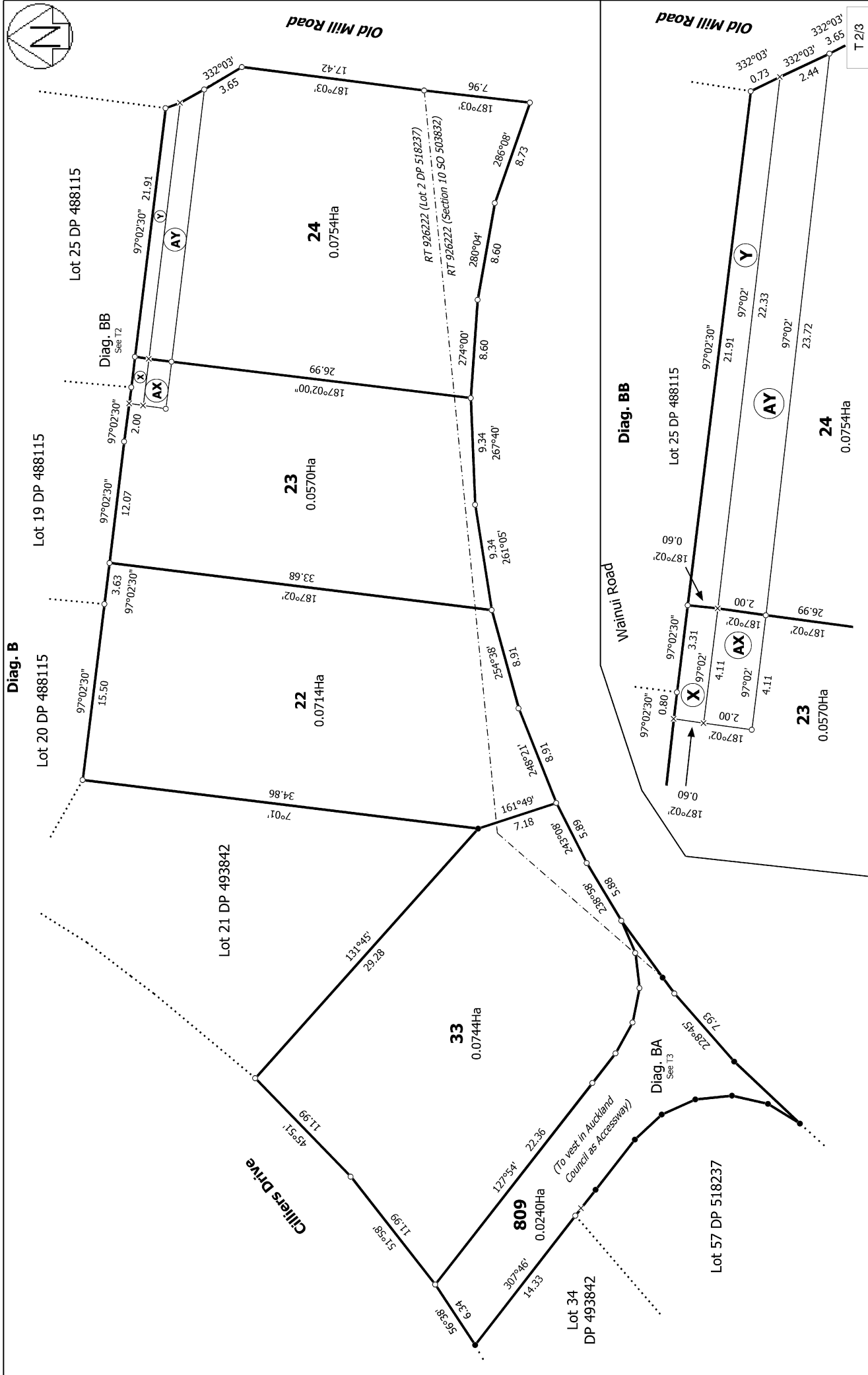
221°45' 5.30

221°45' 5.30

221°45' 5.30

221°45' 5.30

221°45' 5.30



<p>Land District: North Auckland</p> <p><b>Digitally Generated Plan</b></p> <p>Generated on: 28/01/2020 09:49am   Page 4 of 5</p>	<p><b>Lots 189-193, 22-24, 33 &amp; 809 Being a Subdivision of Lot 1 DP 518236, Lot 2 DP 518237 and Sections 6 and 10 SO 503832</b></p> <p>Surveyor: Kendall Lisa Reid Firm: Wood &amp; Partners Consultants Ltd</p>	<p><b>Title Plan</b> LT 530615 DRAFT</p> <p>T 2/3</p>
---	--	---

