



Title Plan - LT 505169

Survey Number LT 505169
Surveyor Reference 37001 P7 S2
Surveyor Michael Rowan Hallam
Survey Firm Wood & Partners Consultants Ltd
Surveyor Declaration

Survey Details

Dataset Description Lots 120 - 136, 154 - 160, 202 - 204, 605, 805, 901, 902 & 1002 Being a Subdivision of Lot 1001 DP 501394

Status Initiated

Land District North Auckland **Survey Class** Class A

Submitted Date **Survey Approval Date**
Deposit Date

Territorial Authorities

Auckland

Comprised In

CT 750366

Created Parcels

Parcels	Parcel Intent	Area	CT Reference
Lot 202 Deposited Plan 505169	Fee Simple Title	0.1398 Ha	763250
Lot 203 Deposited Plan 505169	Fee Simple Title	0.1561 Ha	763251
Lot 204 Deposited Plan 505169	Fee Simple Title	0.1407 Ha	763252
Lot 120 Deposited Plan 505169	Fee Simple Title	0.0650 Ha	763226
Lot 121 Deposited Plan 505169	Fee Simple Title	0.0520 Ha	763227
Lot 122 Deposited Plan 505169	Fee Simple Title	0.0520 Ha	763228
Lot 123 Deposited Plan 505169	Fee Simple Title	0.0520 Ha	763229
Lot 124 Deposited Plan 505169	Fee Simple Title	0.0520 Ha	763230
Lot 125 Deposited Plan 505169	Fee Simple Title	0.0520 Ha	763231
Lot 126 Deposited Plan 505169	Fee Simple Title	0.0519 Ha	763232
Lot 127 Deposited Plan 505169	Fee Simple Title	0.0519 Ha	763233
Lot 128 Deposited Plan 505169	Fee Simple Title	0.0519 Ha	763234
Lot 129 Deposited Plan 505169	Fee Simple Title	0.0519 Ha	763235
Lot 130 Deposited Plan 505169	Fee Simple Title	0.0520 Ha	763236
Lot 131 Deposited Plan 505169	Fee Simple Title	0.0520 Ha	763237
Lot 132 Deposited Plan 505169	Fee Simple Title	0.0520 Ha	763238
Lot 133 Deposited Plan 505169	Fee Simple Title	0.0521 Ha	763239
Lot 134 Deposited Plan 505169	Fee Simple Title	0.0653 Ha	763240
Lot 135 Deposited Plan 505169	Fee Simple Title	0.0653 Ha	763241
Lot 136 Deposited Plan 505169	Fee Simple Title	0.0652 Ha	763242
Lot 154 Deposited Plan 505169	Fee Simple Title	0.0648 Ha	763243
Lot 155 Deposited Plan 505169	Fee Simple Title	0.0660 Ha	763244
Lot 156 Deposited Plan 505169	Fee Simple Title	0.0647 Ha	763245

Title Plan - LT 505169

Created Parcels

Parcels	Parcel Intent	Area	CT Reference
Lot 157 Deposited Plan 505169	Fee Simple Title	0.0520 Ha	763246
Lot 158 Deposited Plan 505169	Fee Simple Title	0.0520 Ha	763247
Lot 159 Deposited Plan 505169	Fee Simple Title	0.0520 Ha	763248
Lot 160 Deposited Plan 505169	Fee Simple Title	0.0519 Ha	763249
Lot 901 Deposited Plan 505169	Vesting on Deposit for Road	0.7190 Ha	
Lot 902 Deposited Plan 505169	Vesting on Deposit for Road	0.5072 Ha	
Lot 805 Deposited Plan 505169	Vesting on Deposit for Local Purpose Reserve	0.9331 Ha	763253
Lot 1002 Deposited Plan 505169	Fee Simple Title	13.8378 Ha	763254
Lot 605 Deposited Plan 505169	Fee Simple Title	0.2015 Ha	Multiple
Area AA Deposited Plan 505169	Easement		
Area A Deposited Plan 505169	Land Covenant		
Area B Deposited Plan 505169	Land Covenant		
Area C Deposited Plan 505169	Land Covenant		
Area D Deposited Plan 505169	Land Covenant		
Area E Deposited Plan 505169	Land Covenant		
Area F Deposited Plan 505169	Land Covenant		
Area G Deposited Plan 505169	Land Covenant		
Area H Deposited Plan 505169	Land Covenant		
Area I Deposited Plan 505169	Land Covenant		
Area J Deposited Plan 505169	Land Covenant		
Area K Deposited Plan 505169	Land Covenant		
Area L Deposited Plan 505169	Land Covenant		
Area M Deposited Plan 505169	Land Covenant		
Area N Deposited Plan 505169	Land Covenant		
Area O Deposited Plan 505169	Land Covenant		
Area P Deposited Plan 505169	Land Covenant		
Area Q Deposited Plan 505169	Land Covenant		
Area R Deposited Plan 505169	Land Covenant		
Area S Deposited Plan 505169	Land Covenant		
Area T Deposited Plan 505169	Land Covenant		
Area U Deposited Plan 505169	Land Covenant		
Area V Deposited Plan 505169	Land Covenant		
Area W Deposited Plan 505169	Land Covenant		
Area X Deposited Plan 505169	Land Covenant		
Total Area		17.9751 Ha	

SUBDIVISION OF LOT 1001 DP 501394	
LAND REGISTRATION DISTRICT	NORTH AUCKLAND
PLAN NUMBER	DP 505169
TERRITORIAL AUTHORITY	AUCKLAND COUNCIL
TERRITORIAL AUTHORITY REF	SLC-62000, REG-62001, REG-62002
DATE	NOVEMBER 2016
OUR REF	37001 STAGE P7 S2

SCHEDULE OF EXISTING EASEMENT IN GROSS TO BE RETAINED					
PURPOSE	PREVIOUSLY SHOWN AS	NOW SHOWN AS	SERVIENT TENEMENT	GRANTEE	CREATED BY
ELECTRICITY	MARKED A DP 501394	AREA AA	LOT 1001 HEREON	WAITEMATA ELECTRICITY POWER BOARD	C442974.1

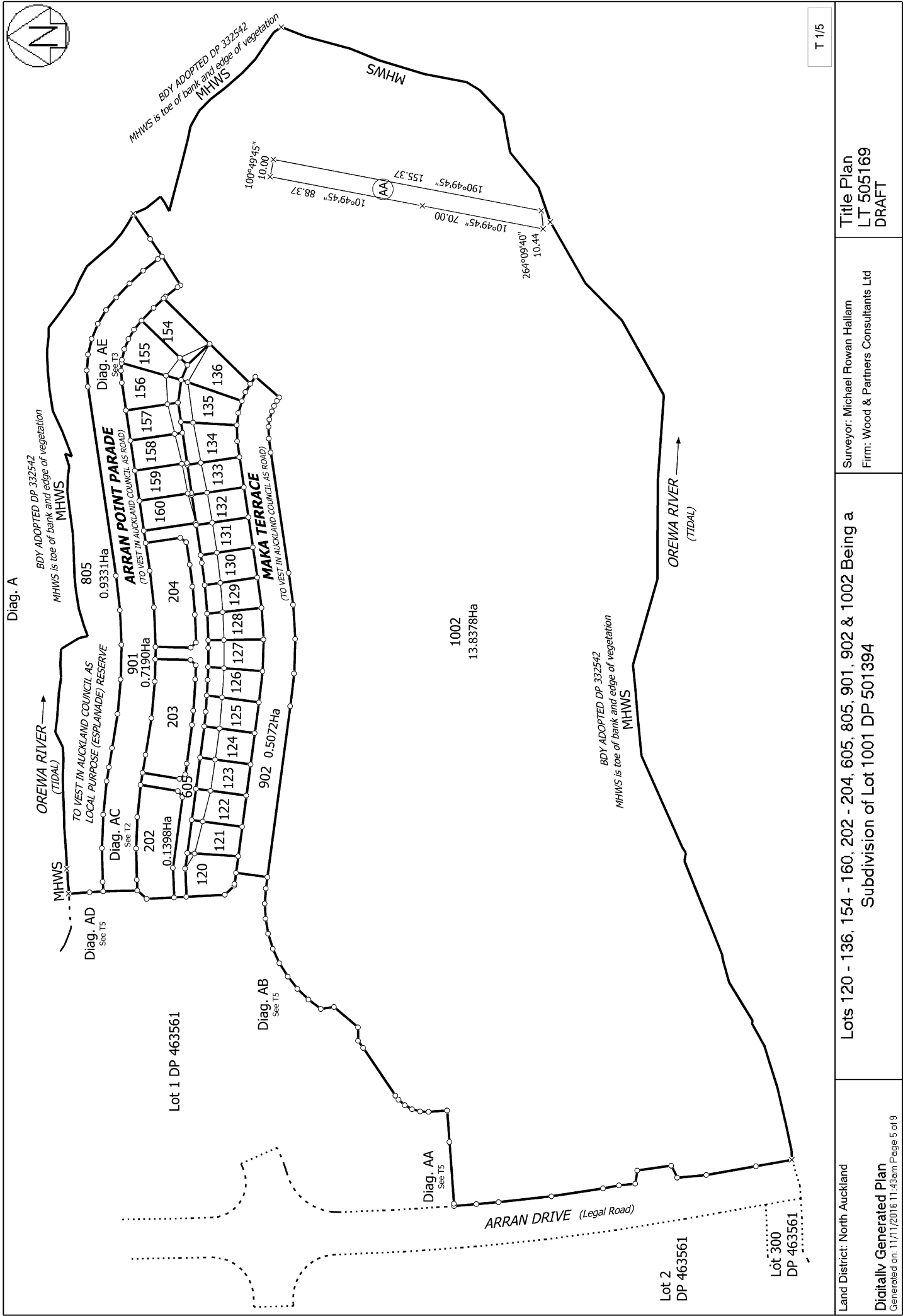
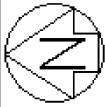
LAND COVENANTS

AREAS SHOWN AS AREAS A, B, C, D, E, F, G, H, I, J, K, L, M, N, O, P, Q, R, S, T, U, V, W & X HEREON ARE TO BE SUBJECT TO LAND COVENANTS.

SUBDIVISION OF LOT 1001 DP 501394	
LAND REGISTRATION DISTRICT	NORTH AUCKLAND
PLAN NUMBER	DP 505169
TERRITORIAL AUTHORITY	AUCKLAND COUNCIL
TERRITORIAL AUTHORITY REF	SLC-62000, REG-62001, REG-62002
DATE	NOVEMBER 2016
OUR REF	37001 STAGE P7 S2

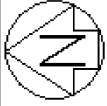
AMALGAMATION CONDITIONS

THAT LOT 605 HEREON (LEGAL ACCESS) BE HELD AS TO SEVEN UNDIVIDED ONE-TWENTY-SECOND SHARES BY THE OWNERS OF LOT 202 HEREON, AS TO EIGHT UNDIVIDED ONE-TWENTY-SECOND SHARES BY THE OWNERS OF LOT 203 HEREON AND AS TO SEVEN UNDIVIDED ONE-TWENTY-SECOND SHARES BY THE OWNERS OF LOT 204 HEREON AS TENANTS IN COMMON IN THE SAID SHARES AND THAT INDIVIDUAL COMPUTER REGISTERS BE ISSUED IN ACCORDANCE THEREWITH.

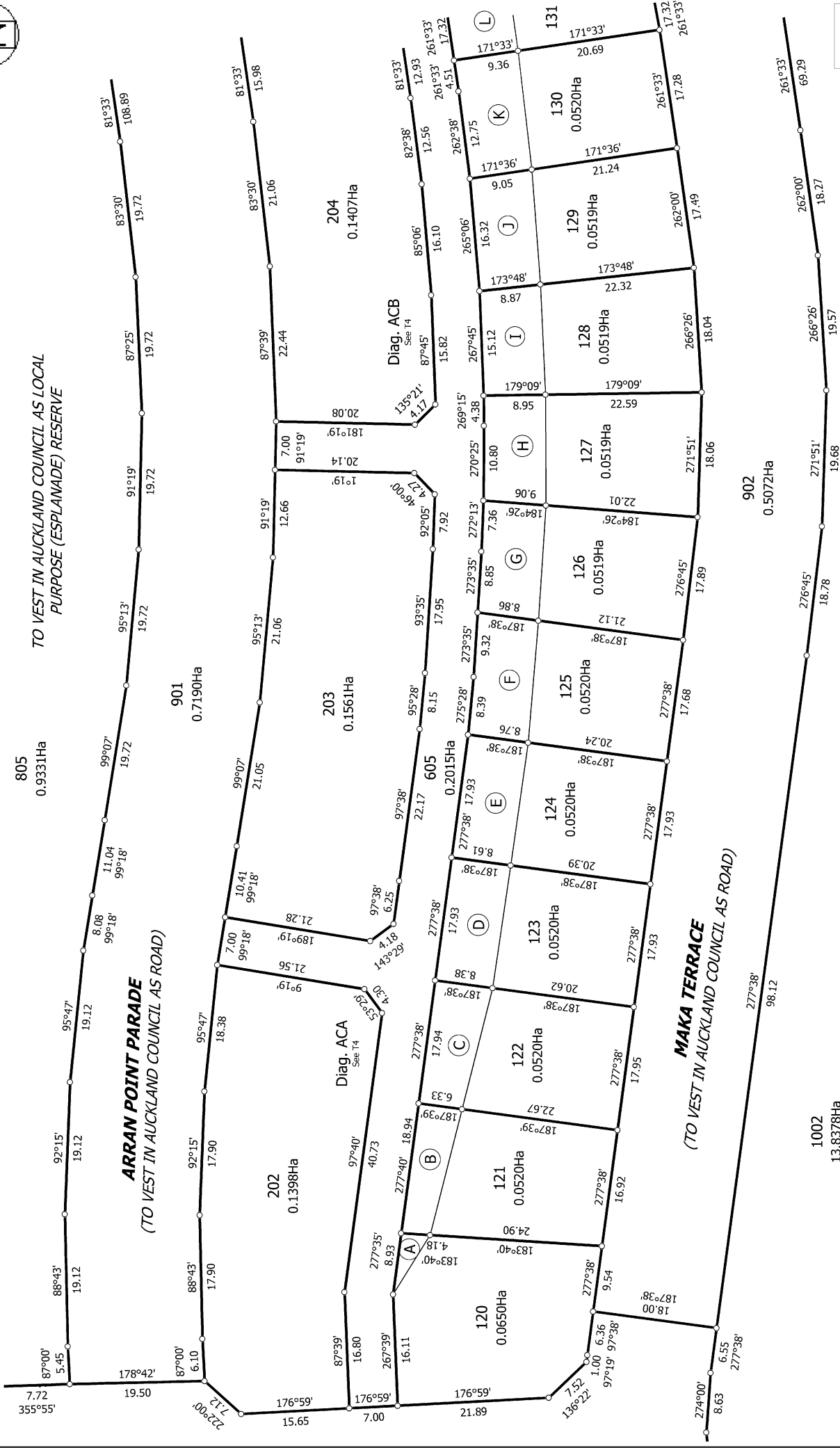


T 1/5

<p>Land District: North Auckland</p> <p>Digitally Generated Plan</p> <p>Generated on: 11/11/2016 11:43am Page 5 of 9</p>	<p>Lots 120 - 136, 154 - 160, 202 - 204, 605, 805, 901, 902 & 1002 Being a Subdivision of Lot 1001 DP 501394</p>	<p>Surveyor: Michael Rowan Hallam</p> <p>Firm: Wood & Partners Consultants Ltd</p>	<p>Title Plan</p> <p>LT 505169</p> <p>DRAFT</p>
---	---	--	--



Diag. AC



T 2/5

Land District: North Auckland

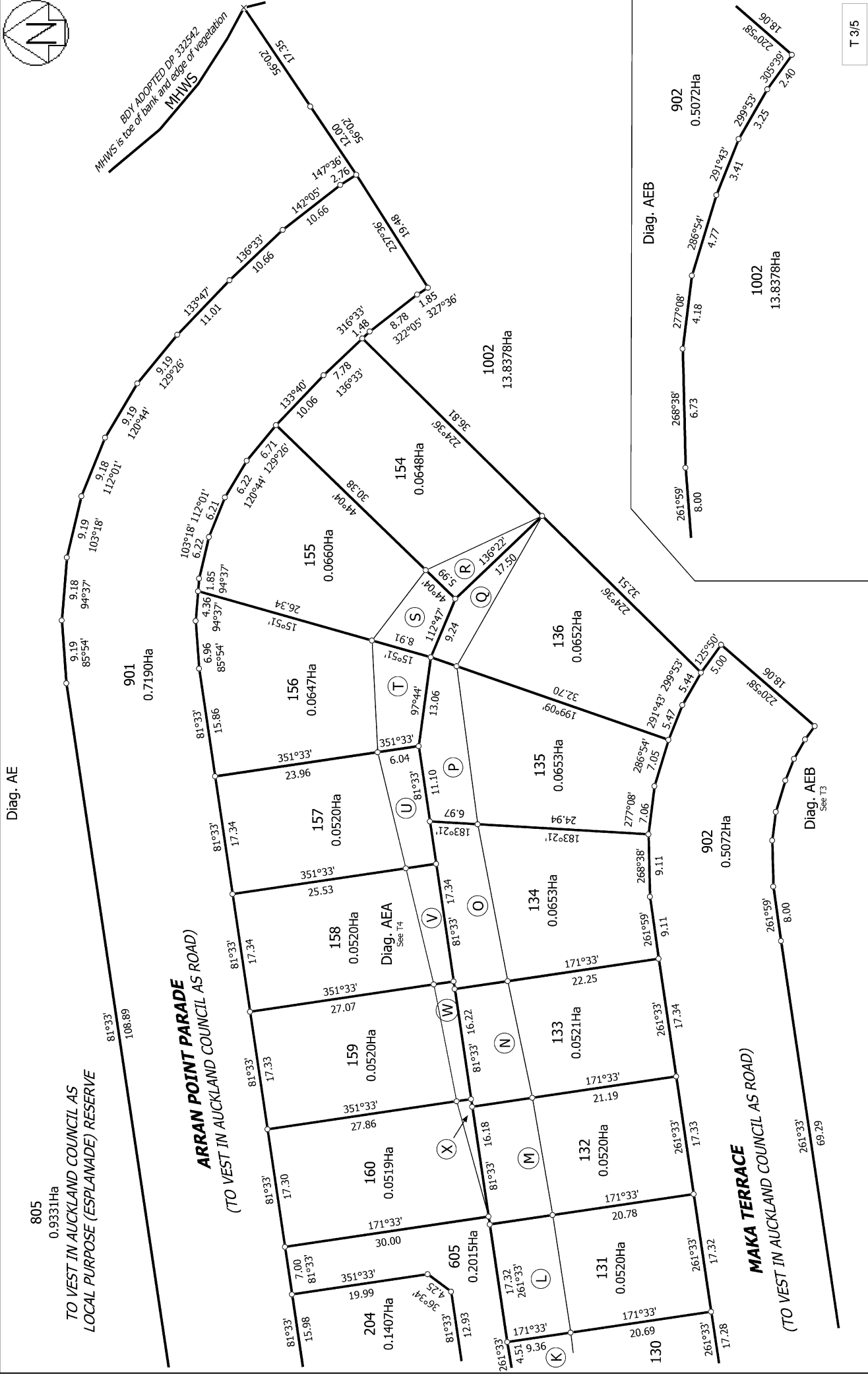
Digitally Generated Plan

Generated on: 11/11/2016 11:43am Page 6 of 9

Lots 120 - 136, 154 - 160, 202 - 204, 605, 805, 901, 902 & 1002 Being a Subdivision of Lot 1001 DP 501394

Surveyor: Michael Rowan Hallam
Firm: Wood & Partners Consultants Ltd

Title Plan
LT 505169
DRAFT



T 3/5

Land District: North Auckland

Digitally Generated Plan
Generated on: 11/11/2016 11:43am Page 7 of 9

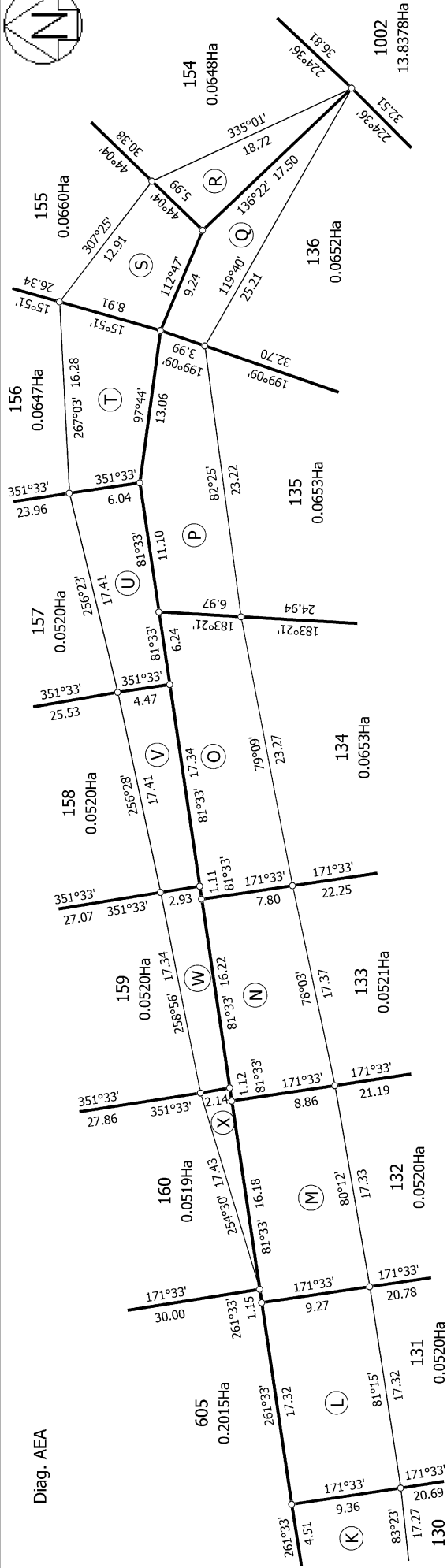
Title Plan
LT 505169
DRAFT

Surveyor: Michael Rowan Hallam
Firm: Wood & Partners Consultants Ltd

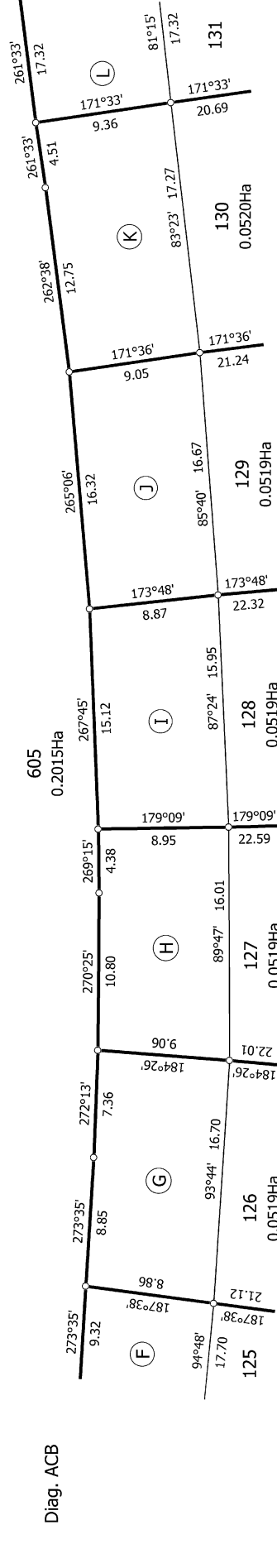
Lots 120 - 136, 154 - 160, 202 - 204, 605, 805, 901, 902 & 1002 Being a Subdivision of Lot 1001 DP 501394



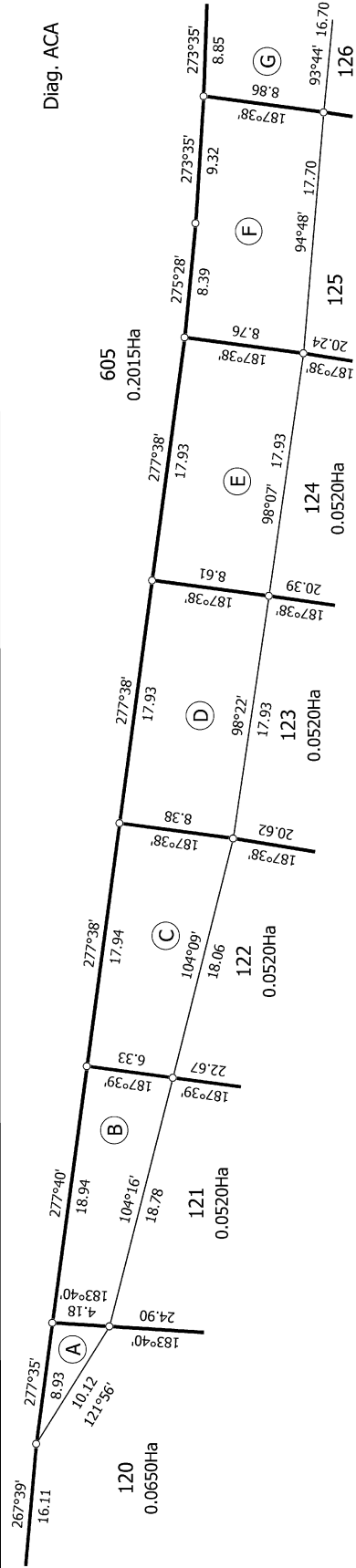
Diag. AEA



Diag. ACB



Diag. ACA

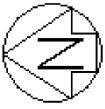


T 4/5

Lots 120 - 136, 154 - 160, 202 - 204, 605, 805, 901, 902 & 1002 Being a Subdivision of Lot 1001 DP 501394

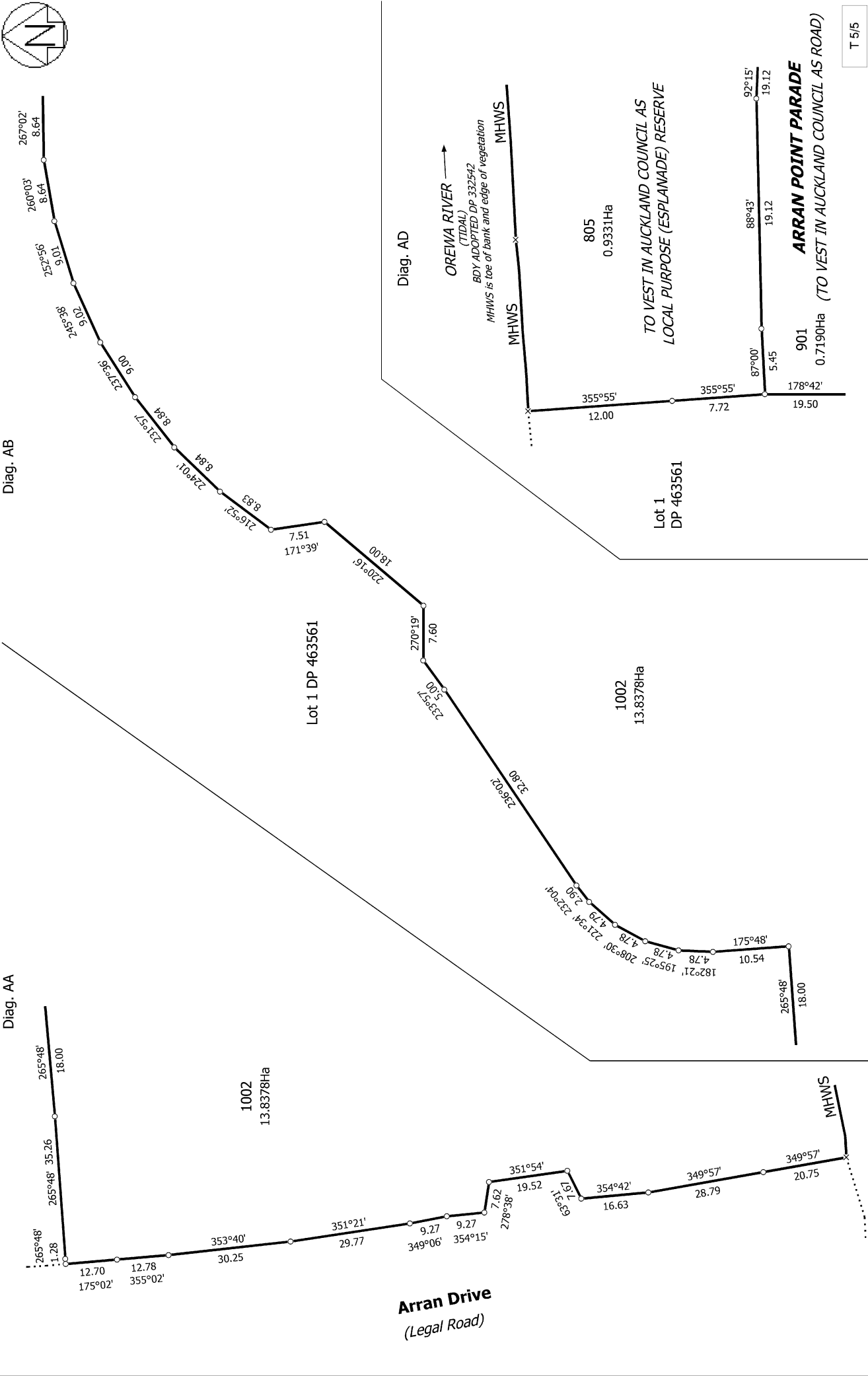
Surveyor: Michael Rowan Hallam
 Firm: Wood & Partners Consultants Ltd

**Title Plan
 LT 505169
 DRAFT**



Diag. AB

Diag. AA



T 5/5

Land District: North Auckland

Digitally Generated Plan

Generated on: 11/11/2016 11:43am Page 9 of 9

Lots 120 - 136, 154 - 160, 202 - 204, 605, 805, 901, 902 & 1002 Being a Subdivision of Lot 1001 DP 501394

Surveyor: Michael Rowan Hallam
Firm: Wood & Partners Consultants Ltd

Title Plan
LT 505169
DRAFT